



Eddie Bauer® Full-Zip Microfleece Jacket.

Warmth and comfort--without the bulk. With flatlock stitching throughout, this lightweight, versatile jacket is cozy on its own or layers easily under a jacket when it's cold. Reverse coil zippers, front zippered pockets, open cuffs and hem. Embroidered Eddie Bauer contrast logo on the left sleeve. Made of 5.3-ounce, 100% polyester microfleece with an anti-pill finish.

CARE INSTRUCTIONS

Machine wash cold. Only Non-chlorine bleach when needed. Tumble dry low. Cool iron if necessary.

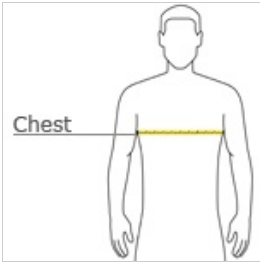


front



back

HOW TO MEASURE



CHEST WIDTH

Measure under the arm and around the fullest part of the chest with arms down, keeping tape horizontal.

SIZE CHART

	XS	S	M	L	XL	2XL	3XL	4XL
Chest	32-34	35-37	38-40	41-43	44-46	48-50	52-54	55-57



Eddie Bauer® Ladies Full-Zip Microfleece Jacket. EB225



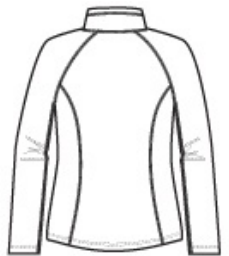
Warmth and comfort--without the bulk. With flatlock stitching throughout, this lightweight, versatile jacket is cozy on its own or layers easily under a jacket when it's cold. Reverse coil zippers, front zippered pockets, open cuffs and hem. Princess seams, embroidered Eddie Bauer contrast logo on hem. Made of 5.3-ounce, 100% polyester microfleece with an anti-pill finish.

CARE INSTRUCTIONS

Machine wash cold. Only Non-chlorine bleach when needed. Tumble dry low. Cool iron on reverse side if necessary.

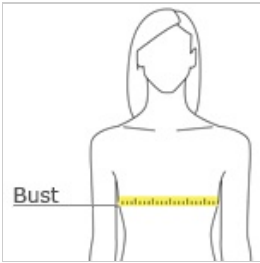


front



back

HOW TO MEASURE



BUST

Measure under the arm and around the fullest part of the bust with arms down, keeping tape horizontal.

SIZE CHART

	XS	S	M	L	XL	3XL	4XL	2XL
Size	2	4/6	8/10	12/14	16/18	24/26	28/30	20/22
Bust	32-33	34-35	36-37	38-40	41-43	47-49	50-52	44-46

COLOR INFORMATION



Black
PMS NTR BLACK



Grey Steel
PMS 7540C



Navy
PMS 533C

C